

203 (8")



32  
(1.3")

adjustable  
up to 3000  
(10')  
standard

adjustable  
up to 30500  
(100')  
custom



150-191  
(5.5'-7.5')

- PENDANTS: seven  
MOUNTING: round canopy 203mm (8") in diameter x 32mm (1.3") deep  
LAMPING: 1.5w LED (2000K, 2500K, 3500K)  
COAX: adjustable 3000mm (10') standard / up to 30500mm (100') maximum  
MATERIALS: blown glass, braided metal coaxial cable, electrical components, brushed nickel canopy  
WEIGHT: approximately 17.2kg (37.9lb)  
POWER SUPPLIES: integral

#### DESCRIPTION

100.7 is a random configuration of seven 100 pendants hung from a round canopy. The pendants are designed to hang in a random configuration, the result is an ambient installation or field of light. The pendant drop lengths on this light fixture are adjustable up to the specified maximum.

100 brings multiple glass artists together in a performative act. Molten glass bubbles are prepared and then smashed together to produce unpredictable interlocking glass forms.

#### NOTES

- + Purchase replacement lamps online at [www.bocci.com/shop/bulbs](http://www.bocci.com/shop/bulbs)
- + All chandeliers will be outfitted with 2500K lamps if not specified.
- + As an alternative to a built-in power supply, Bocci recommends mounting Power supplies remotely in an easily accessible and hidden location for ease of long-term maintenance.

US Patent Pending  
EU Patent # 008526131-0001

Made in Vancouver, Canada

Vancouver  
[sales@bocci.com](mailto:sales@bocci.com)  
[www.bocci.com](http://www.bocci.com)

Berlin  
[europe@bocci.com](mailto:europe@bocci.com)  
[www.bocci.com](http://www.bocci.com)

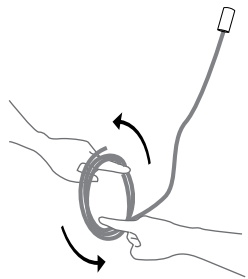


# 100.7

PRODUCT SPECIFICATION

© 2021, Bocci Design and Manufacturing Inc. All rights reserved. Any inquiries should be directed to: [info@bocci.com](mailto:info@bocci.com)

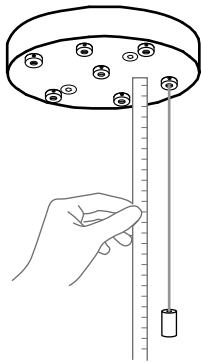
# BOCCI



1

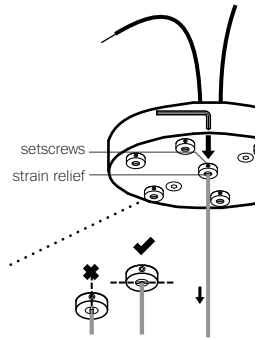
Very carefully uncoil the braided coaxial cable in a spool like manner. Insert your index fingers into opposite sides of the roll then rotate your fingers around each other to unroll the coaxial cable.

Use patience: allow the cable to uncoil completely to avoid kinks.



2

Determine the overall drop for the pendant fixture.



3

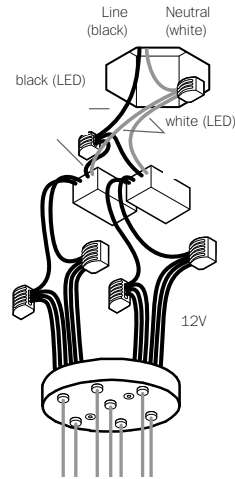
Thread the coaxial cables through the canopy, use a 2mm Allen key to loosen the setscrew in the canopy and gently feed the cable through until you have reached your desired drop length.

Use Allen key to tighten the setscrew to hold the strain relief and secure the coaxial cable at its new length. Perform a gentle tug test to ensure it is secure.

DO NOT OVERTIGHTEN.

**Note: The strain relief is a black plastic collar around the coaxial cable. There is a single slot opening on the side of the strain relief component. It is essential that this opening is oriented at 90 degrees to set screw chamber. There can be no contact between the set screw and the cable.**

RISK OF ELECTRIC SHORT!



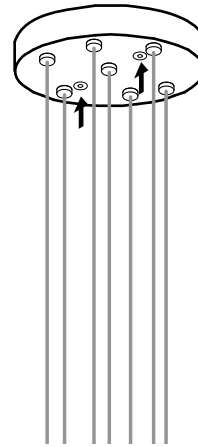
4

Connect the black wire to black and white wire to white wire.

Connect the coaxial cable to the open slots in the terminal block on the 12V side of the power supplies.

Ensure that the braided outer wires are all connected to one 12V output wire and all inner insulated wires are connected to the other or a short will occur.

Once all coaxial connections are made, lift the fixture into position and connect the line voltage to the open slot in the appropriate terminal block.

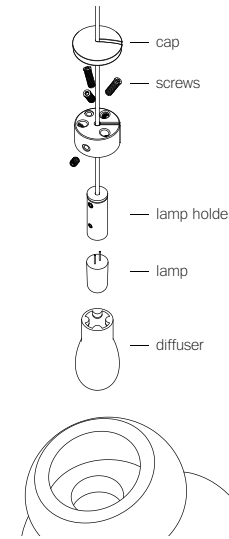


5

The client is responsible to ensure fasteners are attached to a robust structural substrate.

Tuck the power supply and wiring into the canopy. Line up the fastener holes or connect directly to structural ceiling surface using the fasteners provided.

Turn power to fixture on.

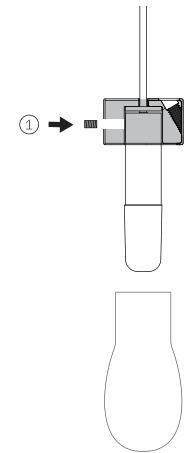


6

**Please note that the crisp cut edges of the 100 pendants are fragile and can chip if not handled with care when installing and cleaning.**

**Please ensure they do not have impact during hanging. Best practice is to install from one side of the fixture to the other.**

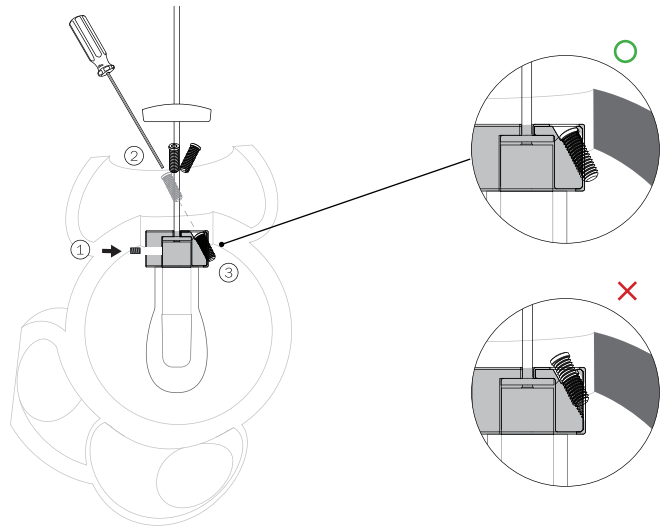
**Bocci recommends wearing gloves during the installation. The edges of the glass may be sharp to handle.**



7

Step 1: Attach the lamp holder to the pendant hardware with set screw provided.

Plug the lamp into lamp holder and slide on the diffuser. Do not touch the lamp with your bare hands. Ensure power to lamp is working correctly.



8

Step 2: Insert the pendant hardware assembly into the pendant.

Step 3: Tighten the 3 screws until they are fully engaged (refer to illustration above).

9

Give the pendant a gentle pull to ensure the screws are locked onto the pendant.

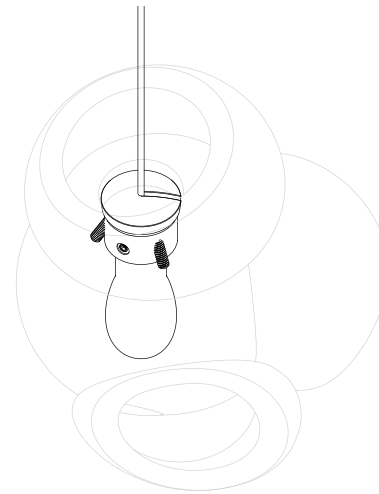
Slide cover cap onto the coaxial cable and place into the inset portion of the pendant hardware.

10

The cap should sit flat on the pendant hardware.

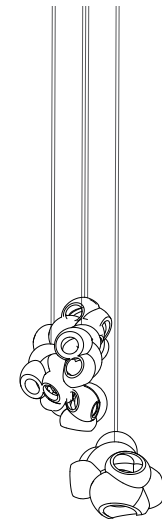
If the screws are sticking out and the cap isn't sitting flat on the pendant hardware, please check to ensure the screws are fully engaged.

Refer to step 8 & 9 for more details.



11

Clean fingerprints from surfaces.



For additional assistance,  
please contact Bocci:

Vancouver  
sales@bocci.com  
www.bocci.com

Berlin  
europe@bocci.com  
www.bocci.com

US Patent Pending  
EU Patent # 008526131-0001

Made in Vancouver, Canada



LOW VOLTAGE LUMINAIRE  
E476186

100.7

PRODUCT INSTALLATION INSTRUCTIONS

© 2021, Bocci Design and Manufacturing Inc. All rights reserved. Any inquiries should be directed to: info@bocci.com

**BOCCI**